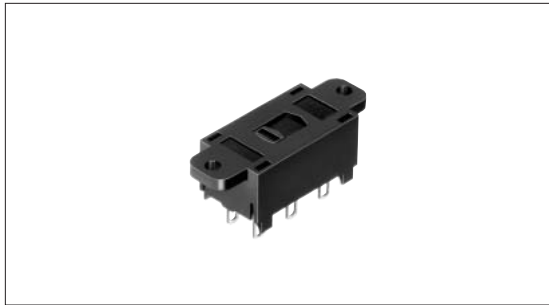


# Power Switch 5A 250V AC Qualified Primary Input Voltage Selection Type SDKG Series



A series of primary voltage changeover switches conforms to UL, SEMKO, and VDE standards.



## Features

- Conforming to the insulation distance and material requirements of Electrical Appliance and Material Safety Law and CSA Standard.
- No cadmium is used in contacts.

## Applications

- Switching the primary input voltage of mini component stereos according to destinations

## Products Line

Circuit arrangement	Rating	Travel (mm)	Operating force	Mounting method	Terminal style	Turning stopper	Marking variety	Minimum packing unit (pcs.)	Products No.	Drawing No.
DPDT	5A 250V AC	6	10 <sup>+10</sup> / <sub>-5</sub> N	φ 3.2 hole	Lead	Without	With index	100	SDKGA41700	1
				Self-tap (For M2.6)	For PC board	With			SDKGA42200	2

## Notes

1. Additional switches not included in the above list are also available. Contact us for details.
2. Safety-approved models are available upon request.

Detector

Push

Slide

Rotary

Encoders

Power

Dual-in-line  
Package Type

Multi Control  
Devices

TACT Switch™

Custom-  
Products

Push  
Type

Rocker  
Type

Slide  
Type

Dimensions

Unit:mm

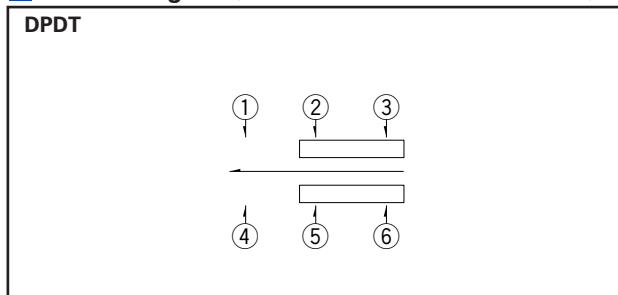
No.	Style
1	<p><math>\phi 3.2</math> hole (Mounting part)</p>
2	<p>Self-tap hole (Mounting part)</p>

Terminal Style

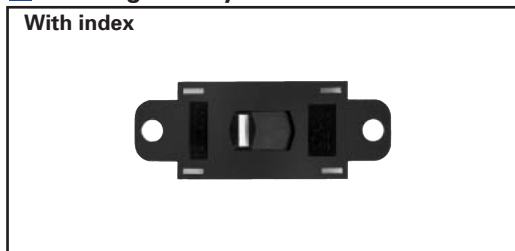
Unit:mm

<p>Lead</p>	<p>For PC board</p>
-------------	---------------------

Circuit Diagram (Viewed from the Direction A)



Marking Variety



Note

Consult with us for other markings.

- Detector
- Push
- Slide
- Rotary
- Encoders
- Power**
- Dual-in-line Package Type
- Multi Control Devices
- TACT Switch™
- Custom-Products
- Push Type
- Rocker Type
- Slide Type

## Products Specifications

Items		Type	Slide			
		Series	SDKG SDKH	SDKP	SDKT	
Operating temperature range		-10°C to +60°C				
Rating		5A 250V AC		6A 125V AC		
Electrical performance	Contact resistance	50mΩ max. (SDKG) 100mΩ max. (SDKH)	100mΩ max.		10mΩ max.	
	Insulation resistance	500MΩ min. (SDKG) 100MΩ min. (SDKH) 500V DC	500MΩ min. 500V DC		1,000MΩ min. 500V DC	
	Voltage proof	2,000V AC for 1 min.			1,000V AC for 1 min.	
Mechanical performance	Robustness of terminal	10N for 1 min.				
	Robustness of actuator	Operating direction	50N		30N	
		Perpendicular direction	—————		10N	
	Vibration		10 to 55 to 10Hz/min., the amplitude is 1.5mm for all the frequencies, in the 3 direction of X, Y and Z for 2 hours respectively			
	Resistance to soldering heat	Manual soldering	350±10°C, 3±0.5s			
Dip soldering		260±5°C, 10±1s				
Durability	Operating life	100 cycles		20,000 cycles		
		Without load		Load : As ratings		
Environmental performance	Cold	-20±2°C for 96h				
	Dry heat	85±2°C for 96h				
	Damp heat	40±2°C, 90 to 95%RH for 96h				

### Note

※Dip soldering can be used on SDDJE For PC board terminal and SDDJF right angle terminal types only.

Detector

Push

Slide

Rotary

Encoders

Power

Dual-in-line  
Package TypeMulti Control  
Devices

TACT Switch™

Custom-  
ProductsPush  
TypeRocker  
TypeSlide  
Type