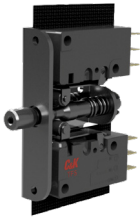


SL Series Sealed Interlock Door Switches

NEW



Features/Benefits

- IP67 rated encapsulated wires version
- Dust tight for the quick connect terminal version
- From 0.1A to 10A max. / AC or DC Voltage
- Push (MOM) / pull motion (maintained)
- Threaded or non-threaded plunger
- Excellent sealed solution for harsh or outdoors applications
- Ruggedize design for door detect applications (harsh environments)

Typical Applications

- Industrial food equipment
- String converters
- Test lab equipment
- Panel builders
- Industrial enclosures

Specifications

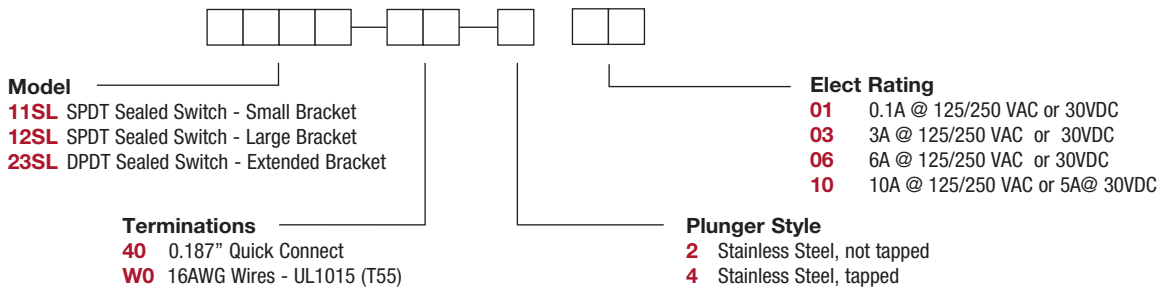
ELECTRICAL LIFE: 10,000 cycles
 CONTACT RATING: 0.1A @ 125/250 VAC or 30VDC; 3A @ 125/250 VAC or 30VDC; 6A @ 125/250 VAC or 30VDC; 10A @ 125/250 VAC or 5A@ 30VDC
 ELECTRICAL OPERATING FREQUENCY: 10-30 operations/minute
 MECHANICAL LIFE: 1,000,000 operations
 MECHANICAL OPERATING FREQUENCY: 120 operations/minute
 INSULATION RESISTANCE: (at 500 VDC/minute) 100 M ohm min.
 DIELECTRIC STRENGTH: 1,500 VAC (50-60 Hz)
 OPERATING TEMPERATURE: -40°C to 85°C (with no incing)
 OPERATING FORCE: 200 grams

Materials

MOUNTING BRACKET: Stainless steel
 PLUNGER: Stainless steel
 SPRING: Copper alloy
 SWITCH MATERIALS:
 CASE: Nylon
 COVER: PBT ACTUATOR: PBT
 MOVABLE CONTACT: Silver alloy
 TERMINALS: Brass
 ROLLER LEVER: Stainless steel
 WIRE: PVC + CU

Build-A-Switch

To order, simply select desired option from each category and place in the appropriate box. For additional options not shown in catalog, consult Customer Service Center.



NEW

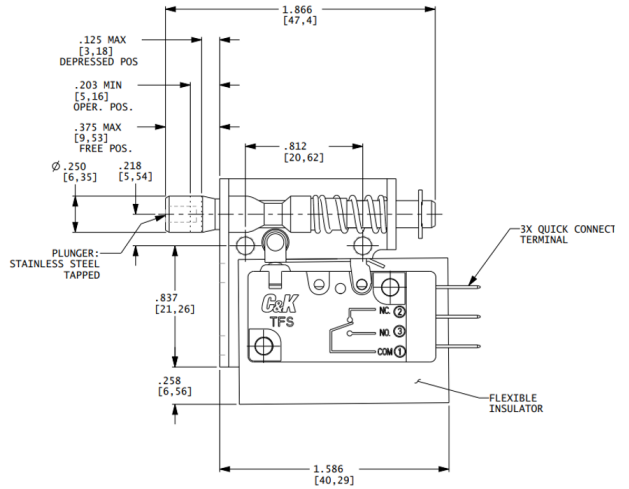
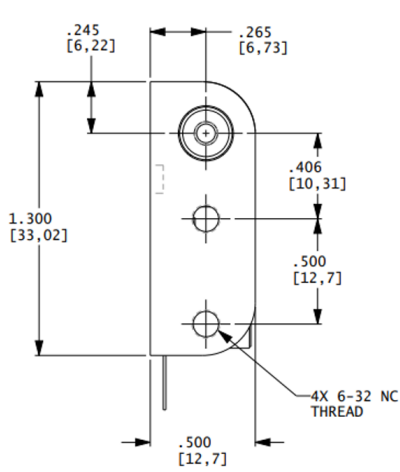
SL Series Sealed Interlock Door Switches

MODEL

11SL WITH SMALL BRACKET



11SL404
SPDT

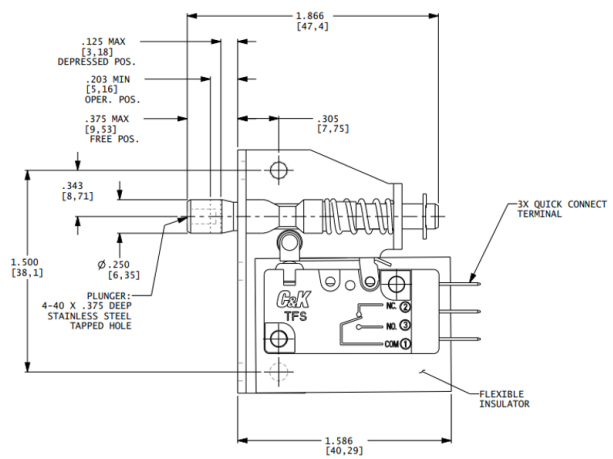
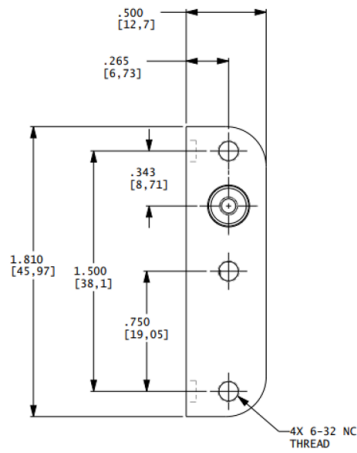


SWITCH CHARACTERISTICS	
OPERATING FORCE LBS MAX	8

12SL WITH LARGE BRACKET



12SL404
SPDT



SWITCH CHARACTERISTICS	
OPERATING FORCE LBS MAX	8



Dimensions are shown: Inches (mm)
Specifications and dimensions subject to change



SL Series Sealed Interlock Door Switches

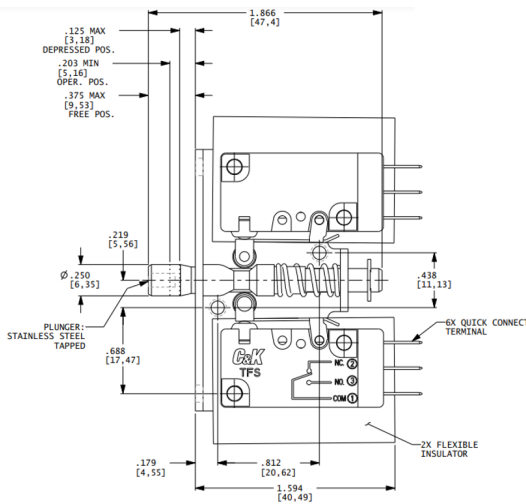
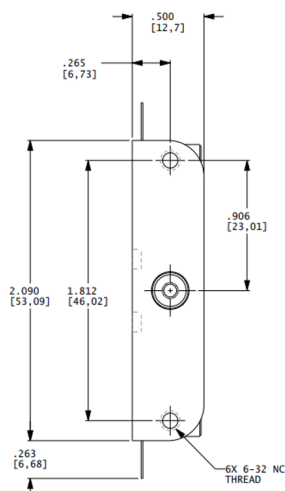
NEW

MODEL

23SL WITH TWO SWITCHES



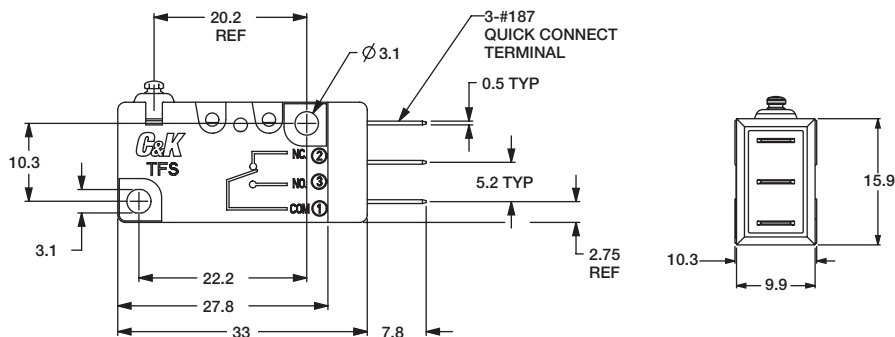
23SL404
SPDT



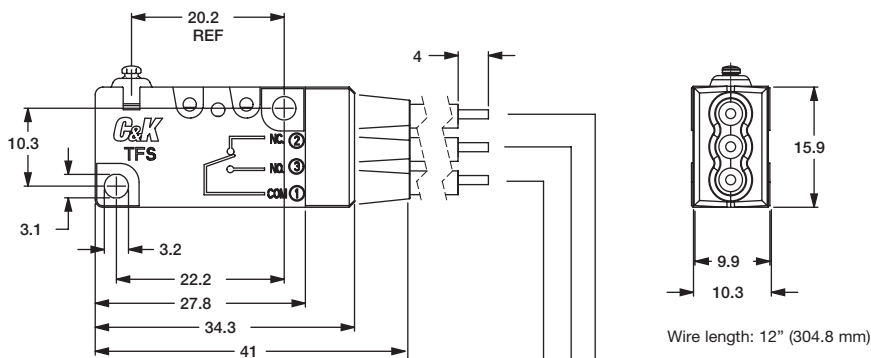
SWITCH CHARACTERISTICS	
OPERATING FORCE LBS MAX	8

TERMINATIONS

40 0.187" QUICK CONNECT



W WIRE UL1015



COM : BLACK / UL1015 16AWG OR EQUIVALENT
NC : RED / UL1015 16AWG OR EQUIVALENT
NO : BLUE / UL1015 16AWG OR EQUIVALENT

Third Angle Projection
Dimensions are shown: Inches (mm)
Specifications and dimensions subject to change



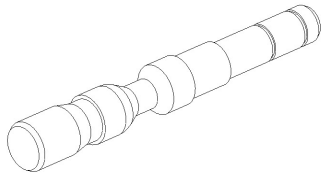
Snap-acting

NEW

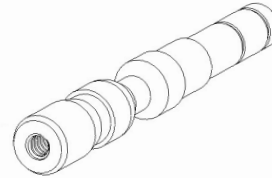
SL Series Sealed Interlock Door Switches

PLUNGERS

2 STAINLESS STEEL, NOT TAPPED



4 STAINLESS STEEL, TAPPED 4-40 X 0.375 (9.52) MIN. DEPTH



ELECTRICAL RATING

- 01** 0.1A @ 125/250 VAC OR 30VDC
- 03** 3A @ 125/250 VAC OR 30VDC
- 06** 6A @ 125/250 VAC OR 30VDC
- 10** 10A @ 125/250 VAC OR 5A@ 30VDC

Electrical Rating Code	AMPS	Wire Type 16AWG
01	0.1	.
03	3	.
06	6	.
10	10	.



Snap-acting