

# Detector Switch SSS-57 Series

## Features

- ◇Superb reliability by our own sliding contacts mechanism.
- ◇Light operating force for paper detection.
- ◇Custom-made of the knob style is possible and please feel free to contact us beforehand.
- ◇Suitable connector : Tyco 173977-2



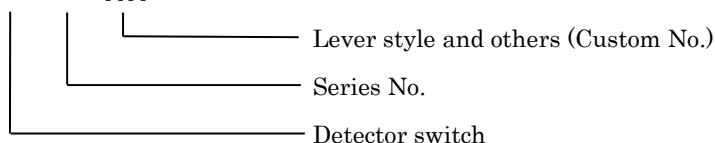
SSS-57-1

## Applications

- ◇Fax paper detection for printers, etc.

## Product Number

SSS - 57 - [ ] [ ]



## Products Line

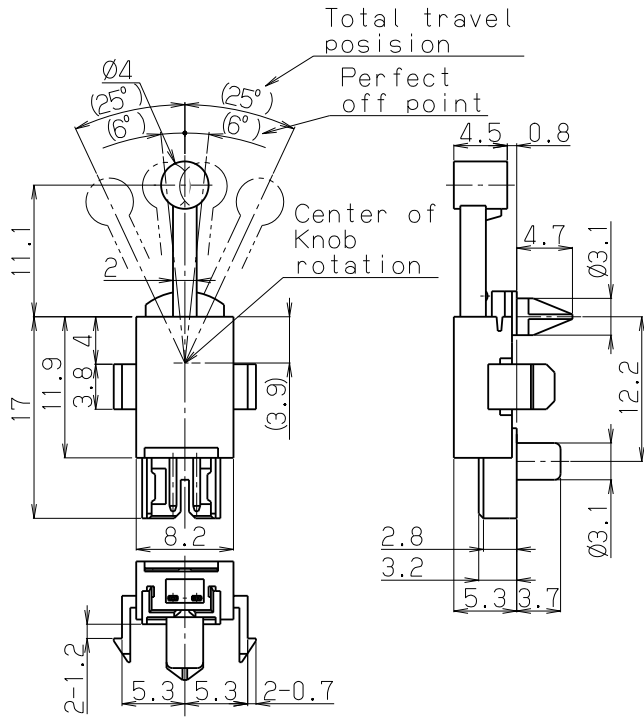
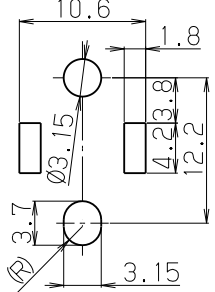
No	Products No.	Operating force	Travel		Connection method	Fixing method
		R direction L direction	ON Range	Total ravel		
1	SSS-57-1	MAX 98mN	12 degree (single side 6 degree)		Connection of connector	Snap in

## Typical Specifications

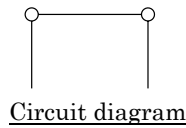
Item	Specifications
Circuit-Position	1 pole - 1 position
Type	Normally Close
Ratings (max.) ( Resistive load )	1mA 5V DC
Contact resistance	100 milliohm max.
Operating life	100,000 cycles
Operating temperature range	-10 to +70 degree Celsius
Storage temperature range	-30 to +80 degree Celsius

Dimensions

Unit : mm

No	Style	P.C.B mounting hole Dimensions Terminal style (TOP VIEW)
1	<p>SSS-57-1</p>  <p>Labels in drawing: Total travel position, Perfect off point, Center of Knob rotation, Ø4, (25°), (6°), 11.1, 2, 17, 11.9, 3.8, 4, 8.2, 2-1.2, 5.3, 5.3, 2-0.7, 4.5, 0.8, 4.7, Ø3.1, 12.2, 2.8, 3.2, 5.3, 3.7, Ø3.1.</p>	 <p>Dimensions in top view: 10.6, 1.8, 4.2, 3.8, 12.2, Ø3.1, 3.7, 3.15.</p>

Circuit diagram



Notes

- The appearance and specifications of the product may be modified to improve its performance without prior notice.
- This catalog shows only outline specifications. When using the product, please obtain formal specifications.
- Please see appendix [Cautions in Using Switches].
- This lever switch is not washable.
- In case circuit and software design consideration against chattering and bouncing shall be taken as below.
  - Read a few times. (Ex. 5ms for 5 times)
  - Set delay time.
  - Set integral circuit.
- As to threshold voltage, center setting is recommended.
- Care shall be taken not to apply stress to the body of switch as it may affect the performance.